

# Windsor Christian Action

SUPPORTING VULNERABLE PEOPLE IN THE  
WINDSOR COMMUNITY



Windsor Christian Action  
Supporting Vulnerable People in the Windsor Community

Charity No. 1154308

# What is Windsor Christian Action (WCA)?

Established registered charity that has been supporting the Windsor community for over 9 years.

Our aim is to support vulnerable people in the Windsor community by giving them access to immediate support but also start the process of rebuilding their lives

To find out more - [www.windsorchristianaction.org](http://www.windsorchristianaction.org)



**Windsor Christian Action**  
Supporting Vulnerable People in the Windsor Community

Charity No. 1154308

# How do we do it?

We have 4 areas of the charity, split by projects, that each focus on support and providing expertise where required



# WCA - Our focus



Supporting our **Windsor families and individuals who are hungry** and in need of non-perishable foods. A growing need across the community as more pressure is put on households due to rising costs. Many of our clients have homes and are working but we provide support to ensure basic food items are provided to fight against food poverty.



Supporting the **homeless and vulnerable by offering a safe space** through a local day centre. We provide hot meals, along with much needed access to healthcare, professional and housing / tenancy advice. A good starting place for life rebuilding skills for those who need it.



Provides care and **safety to primarily young adults and rough sleepers at night** requiring medical care, shelter, and other support



Provides **overnight accommodation and meals to rough sleepers** during the 3 coldest months of the year January to March



# WCA - Our Ambition

## Introducing the Alma Road Hub



Our four projects have never had a proper home, until now.

We have secured a building in the centre of Windsor, on the Alma Road, that will become the new home for our charity, creating a multi functional hub and bringing our services under one roof.

We have big plans but we need local community and business support to help shape and deliver our vision.

Our vision for the building includes:

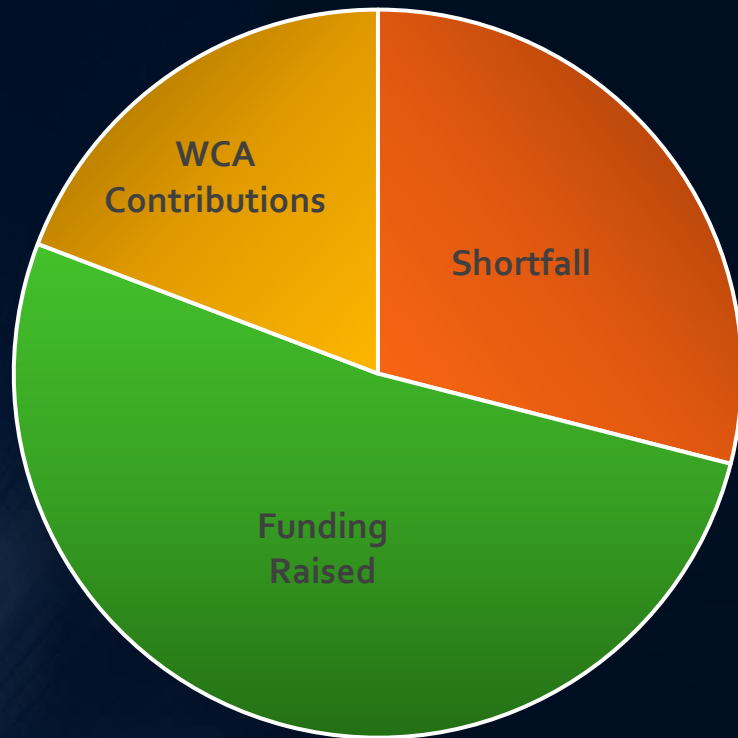
- a fully working kitchen to help cook and provide hot meals
- essential storage for Windsor Foodshare
- a community café, a safe space to meet and get advice
- a kitchen garden where the whole community can get involved
- educational and rehabilitation support services
- segregated sleeping facilities during winter months
- shower and laundry facility
- hub for Street Angels equipment

# Status Update – Programme



# Status Update - Funding

## Alma Road Hub



We have successfully raised a large proportion of the funds through donations, grants and pledges ... but we are still looking to fund the **shortfall of £80k** to complete the project. Rising cost of materials and labour costs are a risk that requires continual focus.

Donations & Pledges	Service Donors
NHS Prescribing	Eversheds Legal Services
Centrica	Stelrad – Central Heating Materials
Churches Together Windsor	RBWM Property Company – Project Mgt advice
Shanley Foundation	
Edward Gostling	



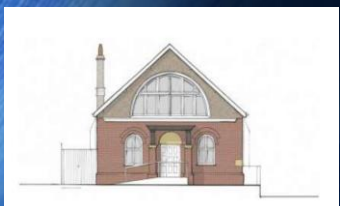
# How can the Windsor Town Forum can help?



- Drive awareness of the projects and the Alma Road Hub through RBWM officers and local community



- Promoting access to grant funding for the Alma Road Hub and wider WCA charities – potential access to local council Homeless Prevention Grant



- Continued support to get the Alma Road Hub open and operational through your support.





Windsor Christian Action  
Supporting Vulnerable People in the Windsor Community

Questions?  
Thank you for your time